



EAGLE EYE

Terminal Automation Solution



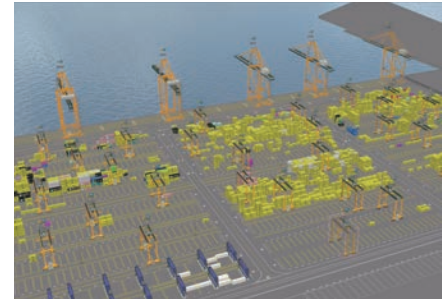
UNLOCK NEW EFFICIENCIES WITH 360° WORKFLOW VISIBILITY

Imagine having a 3D bird's eye view of the entire terminal environment, in real time. Containers on the move, and the equipment and systems that move them — EAGLE EYE can see and track them all, while optimizing work processes to give management total visibility, control and foresight. Via remote sensors mounted on terminal assets and equipment, transmitted via wireless signals such as DGPS/INS/RFID/PDS, EAGLE EYE transforms these IoT data into insightful visuals and information. The system enables command centre to spot bottlenecks, improve workload distribution, optimize equipment utilisation and more, thereby increasing productivity, reducing operating costs and, consequently, raising profitability. That's power that enables faster and more proactive responses in any situation, maximizing safety, productivity and competitive advantage.

CyberLogitec

REAL-TIME VIRTUAL TERMINAL

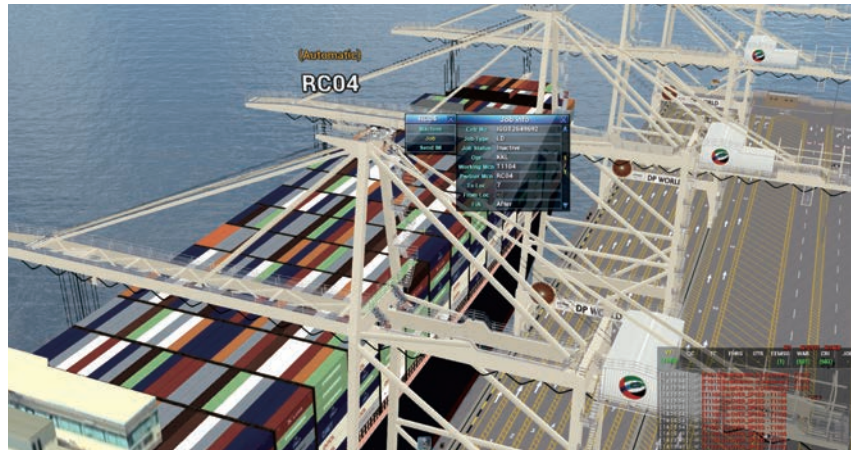
EAGLE EYE is an IoT-enabled integration platform that value-adds to existing TOS by enabling real-time tracking and monitoring of equipment, assets and containers via virtual terminal functionalities. Fully integrated with OPUS Terminal solution, it can also be integrated with 3rd party and in-house TOS via minimal customization.



VIRTUAL TERMINAL

See it all as it happens, and even before

By integrating different equipment signals on one server, EAGLE EYE displays real-time 2D and 3D graphics of the entire terminal operation. This allows a comprehensive and holistic view of daily activities without the blind spots of CCTV monitoring which is stationary surveillance limited by camera positioning, angle and line-of-sight, and dependent on good weather for visibility. Providing a global view of the entire terminal operations while supporting panning zooming and hovering navigation within the view areas, EAGLE EYE enables inspections of apparent and potential bottleneck situations and other unexpected events that require early management intervention to negate.



PROCESS AUTOMATION

AUTOMATIC POSITION TRACKING

Track with seamless precision, beyond conventional blind spots

Locate your terminal assets even in environments where general positioning systems cannot access, such as in GPS 'dead zones', narrow aisles between container stacks and under large container cranes. By enhancing DGPS with INS technology,



EAGLE EYE accurately detects the location of equipment or containers allowing real-time communication and broadcasting of their positions more precisely. EAGLE EYE enables job sequences and overall workflow to be managed seamlessly, around the clock.

ALERT & WARNING SYSTEM

Secure your proactive advantage with timely information exchange



EAGLE EYE manages equipment speed, estimated arrival time and workload by alerting operators to terminal assets that are behind schedule. By tracking sensor indicators such as speed, idling time, engine operation duration, truck mileage, this feature helps terminals to promptly respond to unexpected or inefficient situations with greater agility and proactive precision. Overall workload at the terminal can then be managed by organising operations in real-time to match productivity plans for each equipment. EAGLE EYE's robust alert and warning suite also supports and promotes high safety standards while minimizing the potential for human error.

OTHER FEATURES

- The Emulator function emulates actual equipment load (i.e. ITVs, Cranes) so as to enable the system to run a load test prior to actual implementation
- The Rewinder enables recording mode with playback to assist with investigations on event/activity anomalies
- The Containers Hand-off is an intelligent tagging between the RTG and the truck. This acknowledges automatically the arrival of the correct cargo at the correct truck at the correct yard location. The RTG then picks up the cargo and stacks it. Done without the operators having to confirm the job done. Literally means drivers and operators do not need to touch or interfere with the containers, thus enhancing safety as their eyes on the containers only
- The Job Stepping function predicts the sequence of jobs that are suppose to take place in the near future

OUR CUSTOMERS AROUND THE WORLD



Terminal	DPW Jebel Ali T3	KAP(NCT)	Yarimca	DPW Jebel Ali T2 & T4
Location	Jebel Ali, UAE	Jeddah, Saudi Arabia	Turkey	Jebel Ali, UAE
Berth Throughput	6 Berth 5.5 Million TEU (target)	3 Berth 1.5 Million TEU 4 Million TEU (target)	2 Berth 1.3 Million TEU	T2 : 8 berths, 7 Million TEU T4 : 6 berths, 7 Million TEU (Capacity)
CLT Solutions	OPUS Terminal EAGLE EYE (DGPS/INS, RFID)	OPUS Terminal EAGLE EYE (DGPS, RFID) Auto Gate System Gate OCR/DC STS OCR/DC	EAGLE EYE (DGPS/INS, RFID) OTR Tracking System (Dispenser/Collector)	OPUS Terminal EAGLE EYE (DGPS/INS, RFID)

**ENVISION A BRILLIANT DIGITAL FUTURE WITH EAGLE EYE TODAY.
CONTACT OUR OFFICES AROUND THE WORLD.**

Singapore

460 Alexandra Road #15-01 PSA Building, 119963 Singapore
TEL +65-6274-0591 FAX +65-6274-0580

USA(New Jersey)

65 Challenger Road Suite 120, Ridgfield Park, NJ 07660, USA
TEL +1-201-977-4600 FAX +1-201-641-3041

USA(California)

17777 Center Court Drive, Suite 510, Cerritos, CA 90703, USA
TEL +1-855-757-6787(Toll Free)

China(Shanghai)

Room.513, Dongdaming Road No.1050, Hongkou, Shanghai,
China 200082
TEL +86-21-5200-4105 FAX +86-21-5200-4110

Spain(Algeciras)

Red Logística de Andalucía, Área Bahía de Algeciras
Edf, de Servicios Oficina B006, Área de El Fresno 11370,
Los Barrios, Cádiz, Spain
TEL +34-956-688-307(Extension 1060)

Korea(Seoul)

16th Floor, Nuritkum Square R&D Tower, Worldcup-bukro 396,
Mapo-gu, Seoul, Republic of Korea
TEL +82-2-6350-2000 FAX +82-2-6350-2050

Korea(Busan)

#1508-1511, Centum Skybiz Building, 97, Centum jungang-ro,
Haeundae-gu, Busan, Republic of Korea
TEL +82-2-6350-2000 FAX +82-51-440-1810